

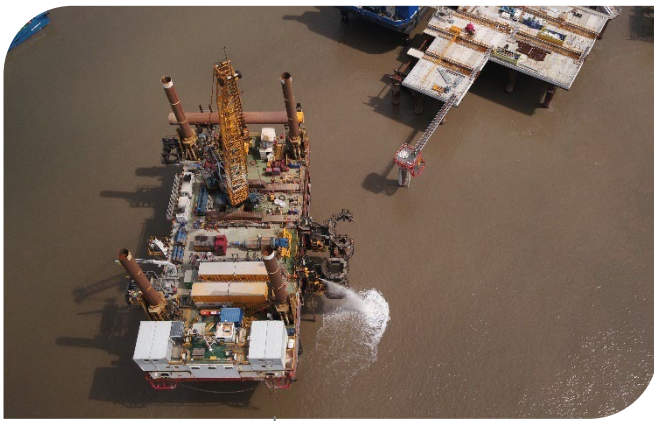


HAVEN SEACHALLENGER

50m x 24m Jack Up Barge

Deck Load

1,000t



OUR FLEET

Monohull Jack Up Barges
 Modular Jack Up Barges
 Modular Stabilised Barge
 Multi Purpose Flat top Barges
 Modular Pontoons
 Work Boats



HAVEN SEACHALLENGER

General

Type Monohull Jack up Barge
 Classification Nippon Kaiji Kyokai, A1, A2, A3, N S (CS) (SEP), Offshore platform USL 2C

Main Dimensions

Length 50m
 Beam 24m
 Depth 4.3m
 Deck Area 1200m²
 Max Leg length 55m
 Leg Diameter 1.8m

Jacking System

Jacking Speed 30m p/h
 Jacking Stroke 3m

Operation Conditions

Max Deck Load 1,000t

Standard Equipment

Hydraulic Power Packs, Navigation Shapes and Lights, Bollards, Handrails, Welfare Facilities.

Optional Equipment

Hydraulic Winches, Safety Boat, Knuckle Boom Crane, Access Walkways, Cantilever Platforms.



DOWNLOAD FULL SET OF TECHNICAL SHEETS

www.red7marine.co.uk

